

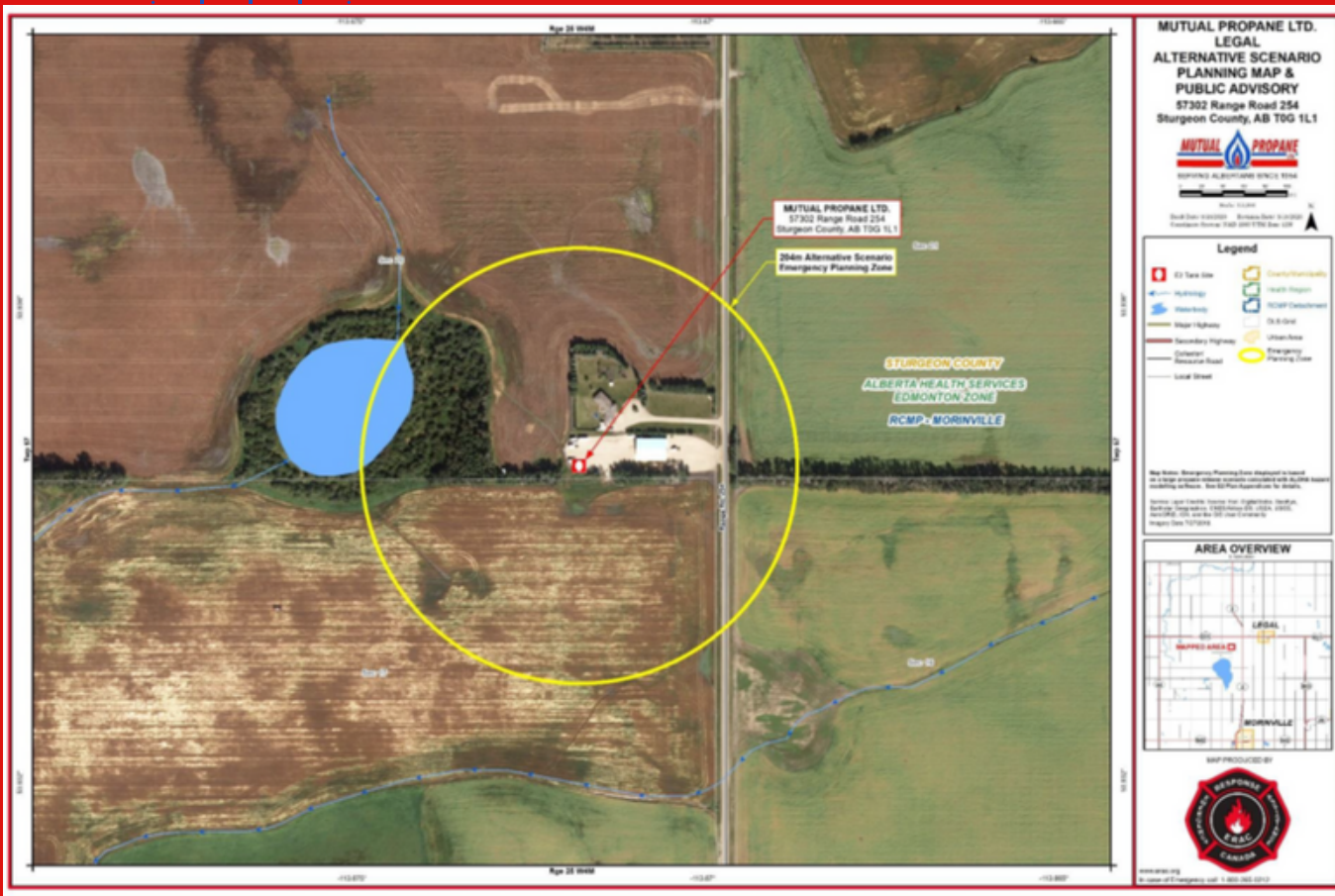
If an Incident Occurs

In the highly unlikely event of an environmental emergency outside of our perimeter fence Mutual Propane has agreements with local agencies to assist with alerting the community. Mutual Propane has a plan in place to minimize the potential of injury to people, and to protect the environment and the property of both the Mutual Propane site and the surrounding community. Communication process to notify public in the event of an emergency will include but are not limited to

- Type of incident, location, date, time.
- Information and guidance concerning actions that should be taken by the public to reduce potential harm to human health and environment
- Details about any community closures or impacts
- Mitigation efforts and next steps to address the incident

There are several ways in which notification may occur and may include local radio and/or social media communications. Instructions may be issued to evacuate or shelter in place. You are encouraged to follow the direction from local authorities.

While the chance of an uncontrolled release of Propane is extremely remote the emergency response plan for this area is in place to ensure your safety.



E2 Communication Plan

The government of Canada has updated the Environmental Emergency (E2) regulations requiring that any industrial facility storing specific quantities of regulated substances notify members of the public who may be impacted by a serious environmental emergency. This notification is to provide awareness of the prevention and safety measures that are in place at our facility. The substance identified is Propane. The probability of an incident occurring is low, however Mutual Propane is taking advanced preparation to ensure your safety.

Propane C₃H₈

The facility receives Liquid Propane via a Propane tanker truck which is then delivered to our storage tank via piping. Propane is heavier than air, so it settles in low lying areas. Propane vapour in high concentrations is an asphyxiant. Breathing high levels may cause dizziness, nausea, light headedness, headache, and loss of coordination. Propane is also an Explosion hazard when it mixes with air and comes into contact with an ignition source such as an electric spark, static electricity or a lit cigarette.

Prevention

- Preventative maintenance program that includes inspection and testing of storage tanks and associated systems
- Trained response teams capable of 24/7 response
- Operator training programs and procedures.



Contact us:

Address: 57302 RR 254

Sturgeon County, AB

T0G 1L1

Phone: 780-451-4454

Email: info@mutualpropane.ab.ca

GPS Coordinates:

53.934657 / -113.671676

NAICS: 424710

24 Hour Number: 800-688-8258



Environmental Emergency Information Pamphlet

